

# 10'W X 24'L CURVED SHELTER

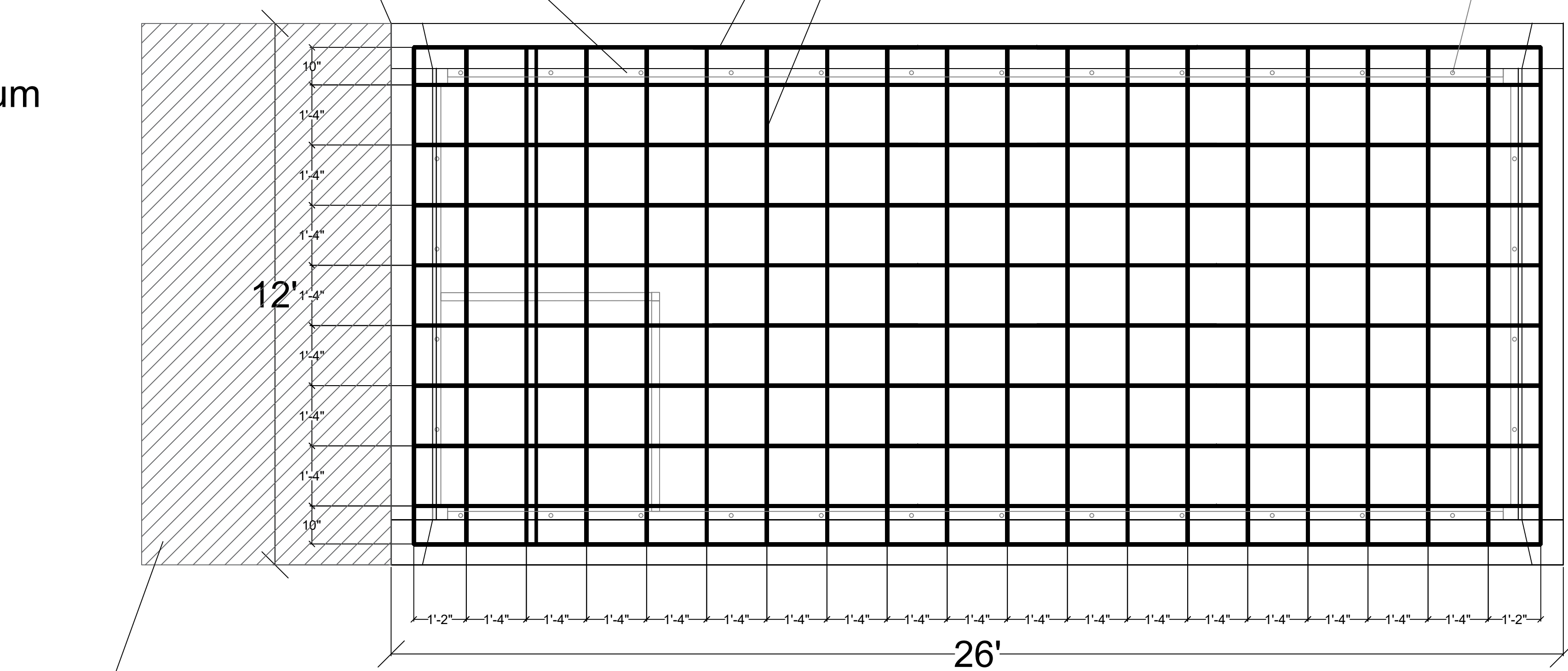
# 12'W X 26'L X 6"H

CONCRETE SPECIFICATIONS 3,000 psi minimum

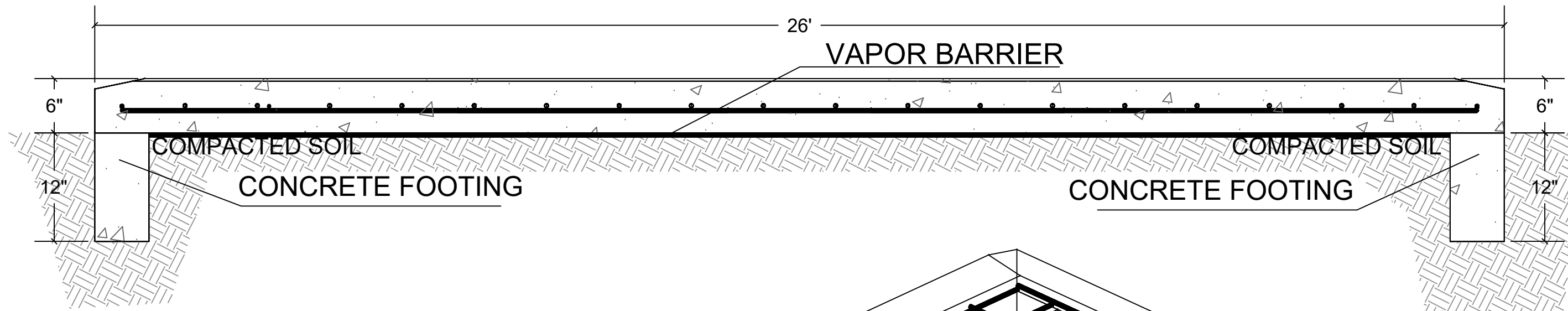
MINIMUM CONCRETE REQUIREMENTS

REBAR CHART	
LONG SIDE REBAR #4 (1/2"): 25'-6" LONG	10
SHORT REBAR #4 (1/2"): 11'-6" LONG	20
<b>TOTAL</b>	<b>30</b>
HELIX CHART	
Concrete required: 8.6 CY X 15 LB/CY	
<b>TOTAL</b>	<b>129LB</b>

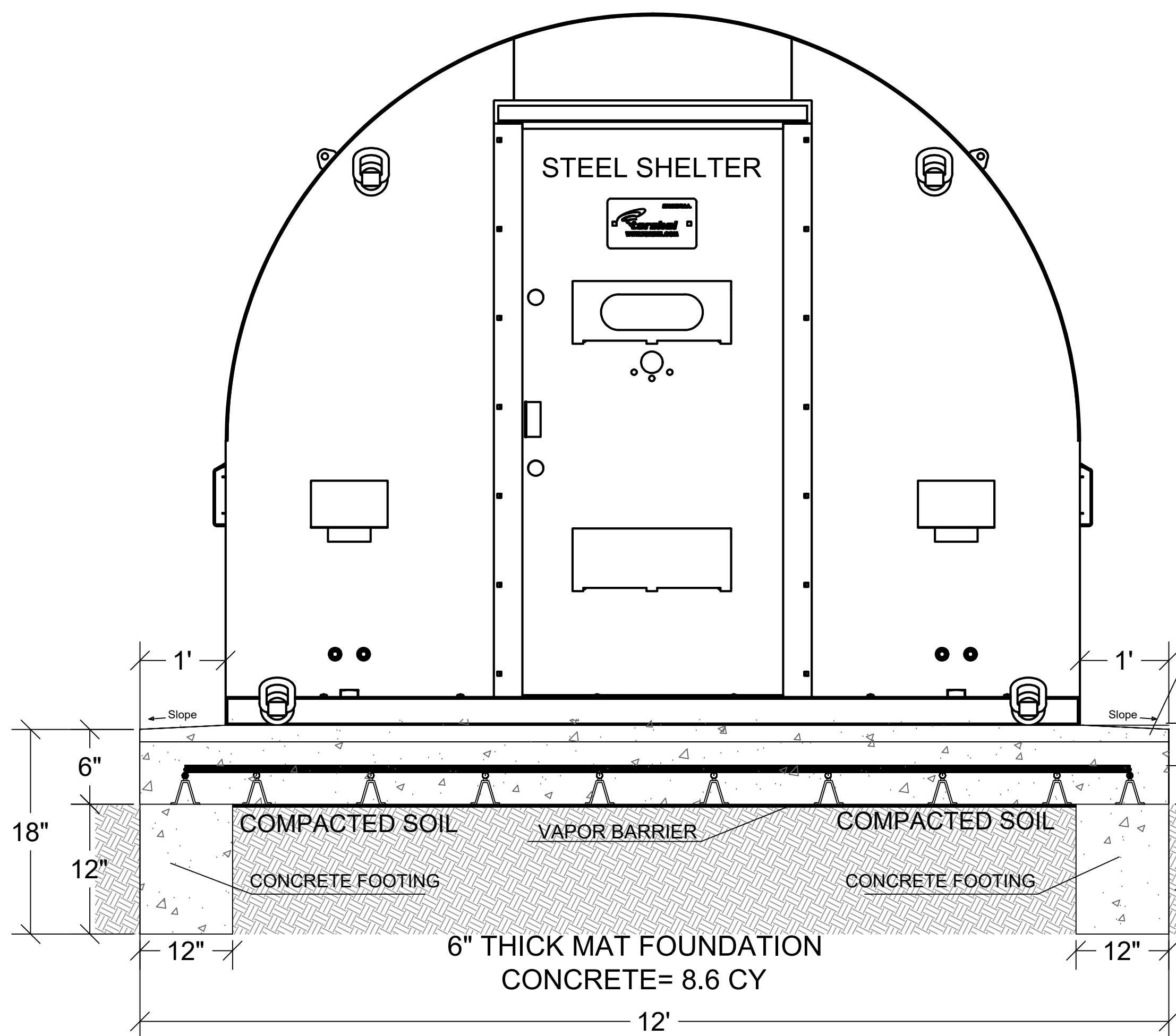
SHELTER FOOTPRINT  
6" THICK MAT FOUNDATION  
TRANSVERSE 25'-6" LONG REBAR #4 (1/2")  
11'-6" LONG REBAR #4 (1/2")  
MAX ANCHOR SPACE @18"




OPTIONAL SLAB EXTENSION: THE CONCRETE SLAB MAY BE EXTENDED BEYOND THE MINIMUM DIMENSIONS SHOWN. ANY EXTENSION MUST MAINTAIN THE SPECIFIED THICKNESS AND REINFORCEMENT



NOTE:  
The concrete corners must be chamfered to prevent damage and ensure proper installation.



NOTE:  
Concrete surface must be leveled using laser-guided equipment to ensure proper alignment and accuracy.

		TITLE: 24'L X 10'W X 6'H Curved Shelter		
DATE:	04/15/2026	REV:	SIZE:	SHEET:
DRAWN BY:	MANUEL GONZALEZ		D	1
CHECK BY:				
NOTE:				