

10'W X 48'L CURVED SHELTER

12'W X 50'L X 6"H

CONCRETE SPECIFICATIONS 3,000 psi minimum

MINIMUM CONCRETE REQUIREMENTS

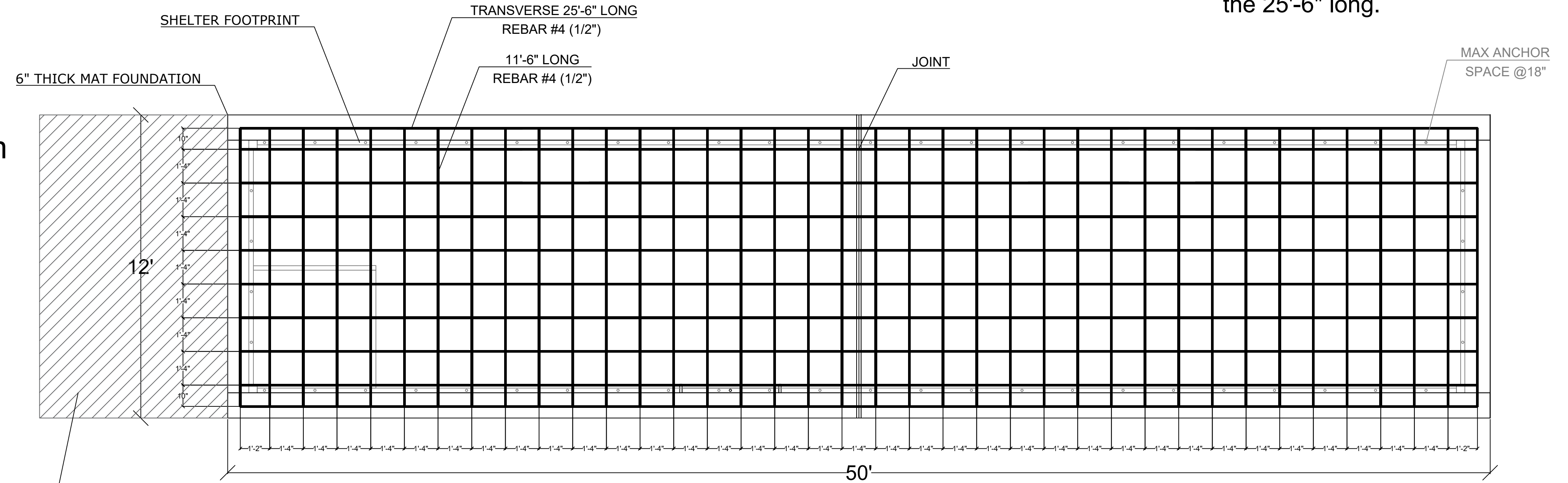
Note: For the long rebar, it might be overlapped to get the 25'-6" long.

REBAR CHART

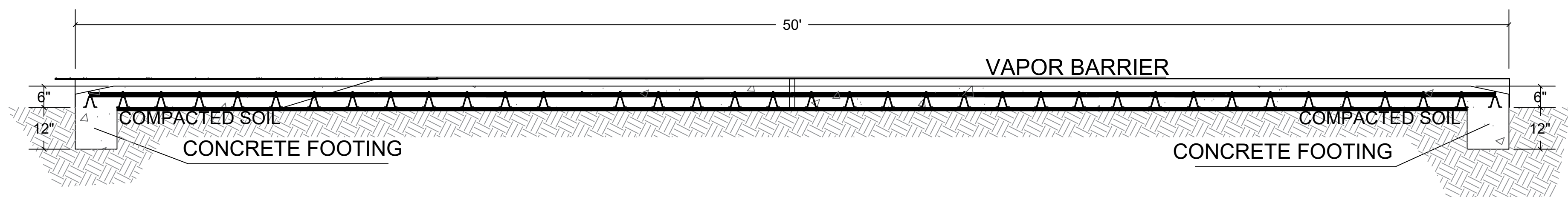
LONG SIDE REBAR #4 (1/2"): 25'-6" LONG	10
SHORT REBAR #4 (1/2"): 11'-6" LONG	38
TOTAL	48

HELIX CHART

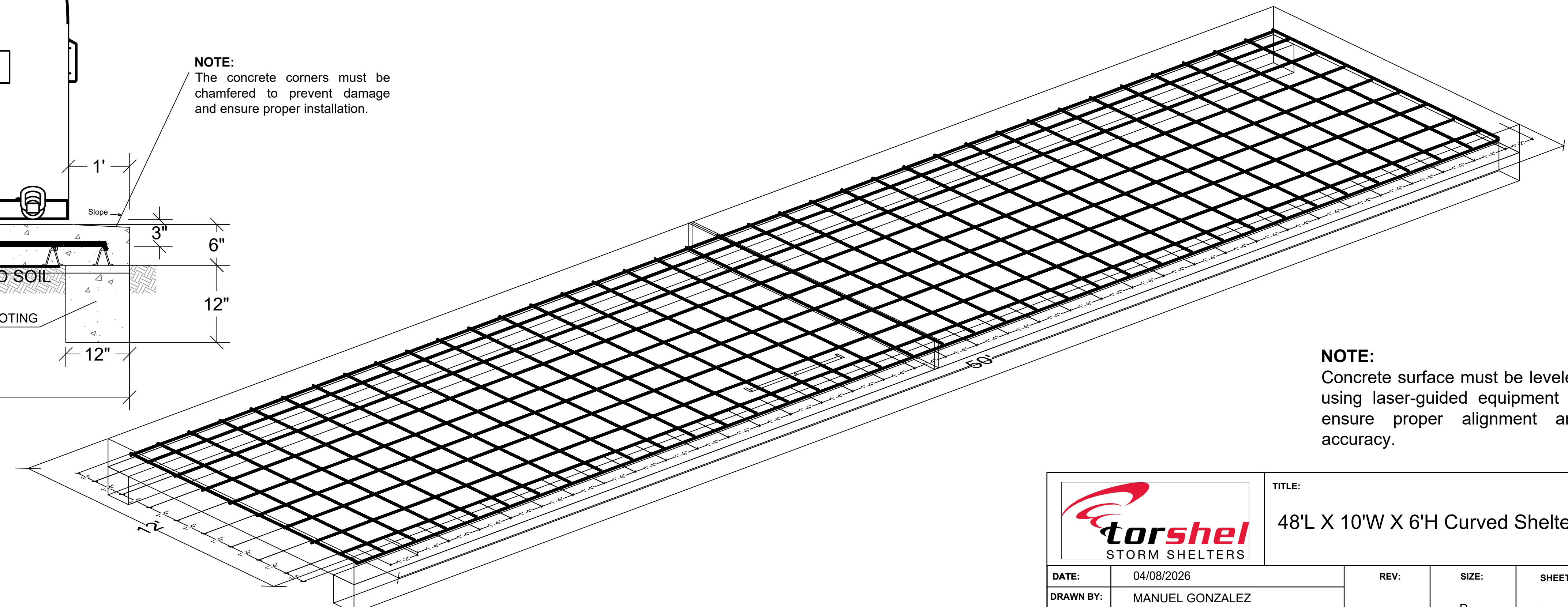
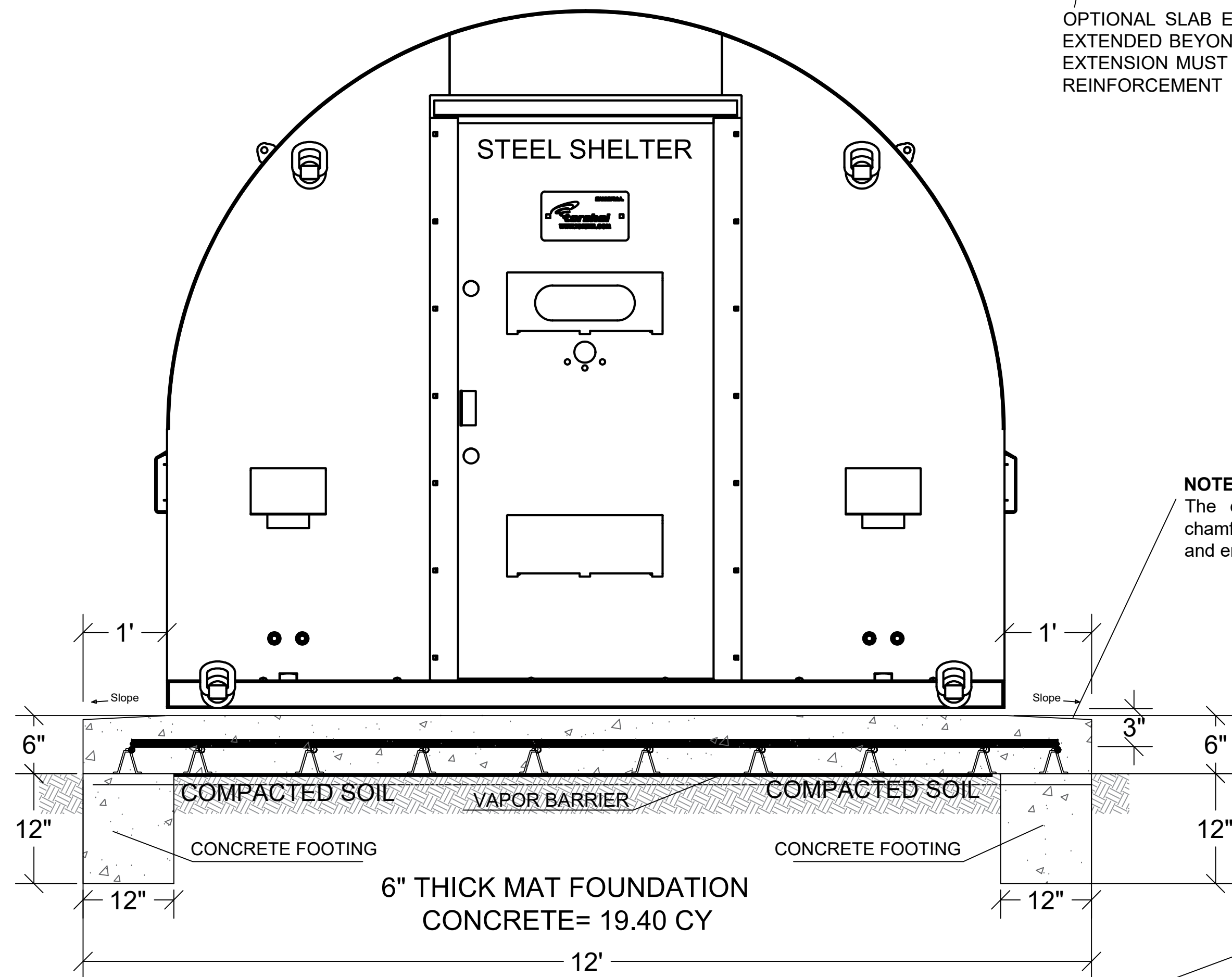
Concrete required: 19.4 CY X 15 LB/CY	
TOTAL	291.00 LB



OPTIONAL SLAB EXTENSION: THE CONCRETE SLAB MAY BE EXTENDED BEYOND THE MINIMUM DIMENSIONS SHOWN. ANY EXTENSION MUST MAINTAIN THE SPECIFIED THICKNESS AND REINFORCEMENT



NOTE:
The concrete corners must be chamfered to prevent damage and ensure proper installation.



NOTE:
Concrete surface must be leveled using laser-guided equipment to ensure proper alignment and accuracy.

		TITLE: 48'L X 10'W X 6'H Curved Shelter		
		DATE: 04/08/2026	REV:	SIZE: D
DRAWN BY: MANUEL GONZALEZ				
CHECK BY:				
NOTE:				