



ENTERPRISE PRODUCTS
**COMMUNITY
STORM SHELTER**
FOR 26-32 PEOPLE

8'W x 20'L x 8'H



TORSHEL IS **BUILT BETTER**

Choosing Torshel products means investing in top-notch storm shelters that use **components rigorously tested by Intertek for quality and safety**. With a lifespan ranging from 50 to 100 years, **our shelters are designed to provide long-term protection**. They are rated for EF5 tornadoes and 250 MPH winds.

We use the **highest-quality steel** to ensure your safety. All our storm shelters are **proudly manufactured in the USA** and come with a robust 10-year warranty. They provide **protection and peace of mind**.



Torshel only uses **powder coating for our storm shelters** because your safety is our priority. We want to ensure that your **shelter stays strong and reliable**, even after years of use.

Choosing a shelter with powder coating means:

- **Better value over time:** Fewer repairs and longer lifespan.
- **Peace of mind:** Knowing your shelter is built to last.



INTERIOR DETAILS

Inner Front Door View



Inner Back Side View



Bullet-Resistant Windows



Gunport

**Door - Inward opening
4 interior heavy-duty
steel sliding locks per door**

**HILTI® wedge and
epoxy anchors**



handicap-accessible door



WHEELCHAIR ACCESSIBLE **BATHROOM**

This unit comes with 1 ADA chemical bathroom located inside the safe room

Interior dimensions: 5 ft W x 5ft L (25 SF)

Battery-powered LED lights

One (1) exhaust fan

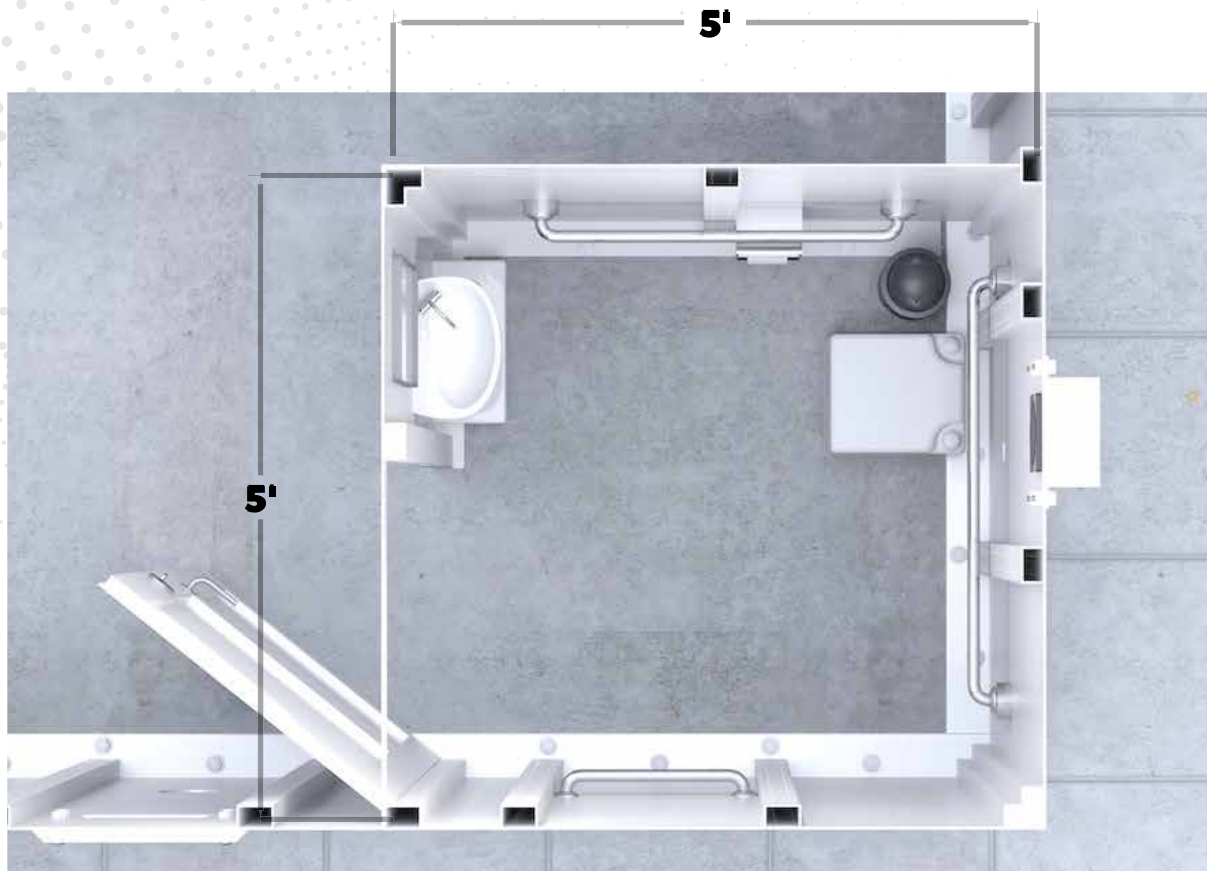
One (1) air intake to provide airflow

One (1) chemical toilet

One (1) portable sink

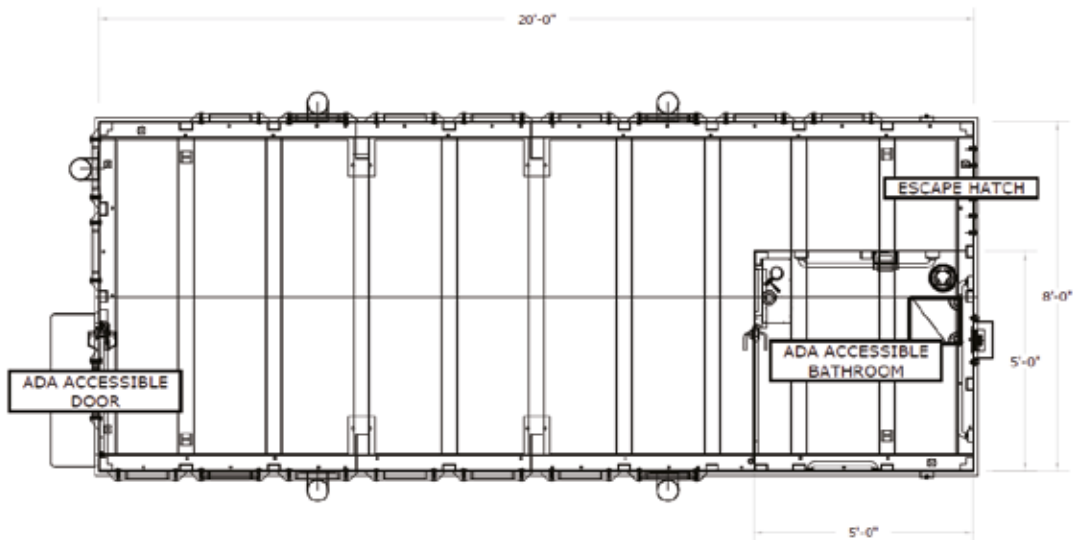
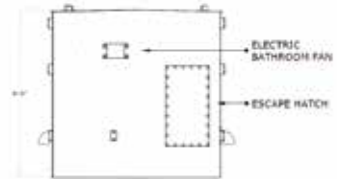
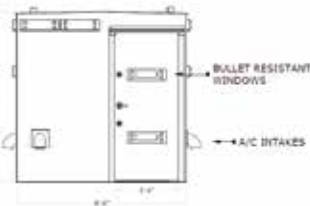
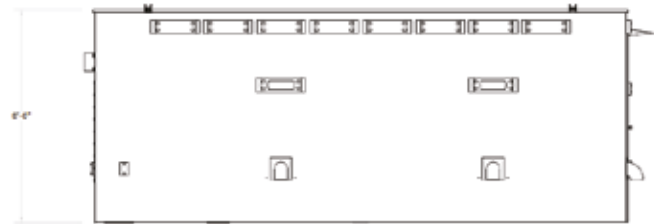
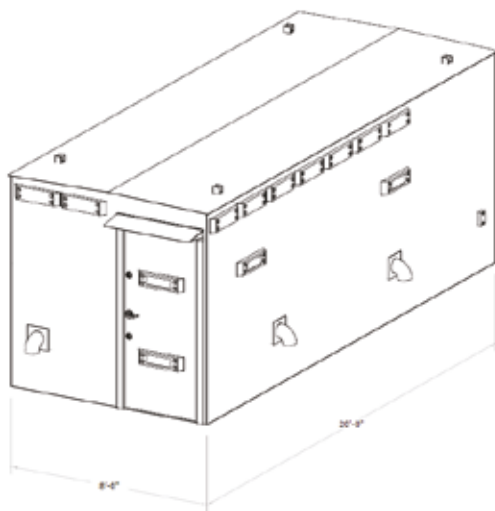
One (1) mechanical lock

Internal walls made of ASTM A36, 3/16" structural steel



GENERAL DRAWINGS

8'W x 20'L x 8'H



ENTERPRISE PRODUCTS

COMMUNITY STORM SHELTER FOR 32 PEOPLE

8'W x 20'L x 8'H



CUSTOMIZED STORM SHELTER FOR **YOUR BUSINESS NEEDS**

We tailor each project to meet the unique needs of your business, incorporating features such as blueprints for electrical wiring, and ADA-compliant chemical toilets.

For electrical supply we offer:

OPTION A:

EF ECOFLOW - DELTA 2 Max
Solar Generator 2048Wh with 400W Solar Panel, LFP Battery Portable Power Station up to 3400W, 6x AC Outlets (Or similar)



OPTION B:

Natural Gas Generator with steel metal enclosure.
Guardian 26kW Home Standby Generator with 200 Amp Aluminum Liquid. (Or similar)



REFERENCE PICTURES PREVIOUS **SUCCESSFUL PROJECTS**

A Fortune 500 Company
in San Antonio, Texas,
Data Centers



School Storm Shelter Argyle, Texas



Cheyenne, Wyoming



Milwaukee, Wisconsin




Atlanta, Georgia





You can always count on Torshel to provide you with the best product at an affordable price.

CENTRAL OFFICE

 (601) 500-7275

 info@torshel.com

 www.torshel.com

CONTACT US TODAY!



Installation available anywhere
in the continental USA.

Prices to be discussed with our
sales reps.

Shipping available **nationwide.**